



**WINK**  
HOTELS

WINK HOTEL SAIGON CENTRE  
**GREEN BUILDING  
GUIDED TOUR**

[WINK-HOTELS.COM](http://WINK-HOTELS.COM)

INDOCHINA VANGUARD HOTELS VIETNAM COMPANY LIMITED



# INTRODUCTION



# LEED

Leadership in Energy and Environmental Design

## GREEN BUILDING



## WHAT IS LEED?

- ✓ Leadership in **E**nergy and **E**nvironmental **D**esign
- ✓ Widely used global green building rating system in the
- ✓ Applies to buildings, community sites, and homes
- ✓ Creates healthy, highly efficient and cost-saving green buildings
- ✓ A globally recognized for sustainability

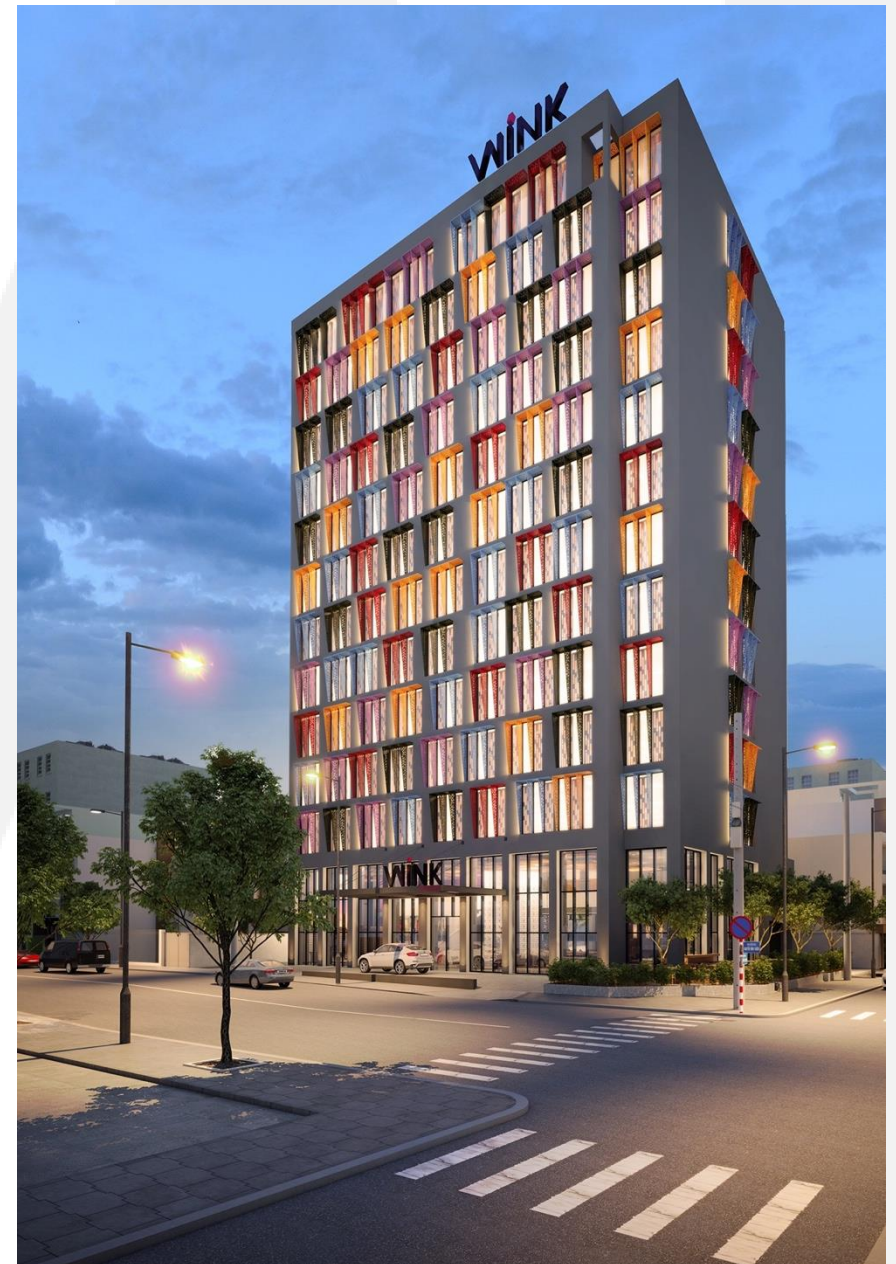
# EDUCATIONAL GUIDED TOUR

---

This educational program is aimed at a wide range of target audiences such as the public, media, professionals, suppliers and students, etc.

This guided tour program was developed to focus on sustainable buildings in the hotel industry, using Wink Hotel Saigon Centre as an example or case study.

A schedule of educational tours including lectures has been proposed since the project's early stages. During the project's construction stage, a number of educational activities and presentations were organized and delivered to various types of stakeholders.





# LEED CREDIT SUMMARY

# CREDIT SUMMARY

## DESIGN STAGE & CONSTRUCTION STAGE

Project Information	
Site area	1,110 m <sup>2</sup>
GFA	9,475 m <sup>2</sup>
Type	Hospitality Building
Floors	12 Floors
Basements	2 Basements
Location	District 1, HCMC, Vietnam
Owner	Phuc Dien Development Investment JSC

Wink Hotel Saigon Centre Credit Summary			
No.	Category	Certified	Remark
1	Integrative process	1	
2	Location and transportation	14	
3	Sustainable sites	3	
4	Water efficiency	9	
5	Energy and atmosphere	14	
6	Materials and resources	3	
7	Indoor environment quality	8	
8	Innovation	5	
9	Regional priority	3	
<b>TOTAL SCORE</b>		<b>60</b>	
Total score for design stage		<b>51</b>	
Total score for construction stage		<b>9</b>	



# SUSTAINABLE FEATURES



## HEALTHY ECOSYSTEM

### Landscape & Irrigation

- Climate-adapted plants
- Low and medium water demand
- Use 100% condensate water for irrigation
- No potable water needed for irrigation

## LESS WATER CONSUMPTION

### Indoor Water Use

- Water-efficient fixtures
- 48% indoor water use reduction
- Install meters for all water systems
- Monitor and track water consumptions



## ENERGY

### ENERGY SAVINGS

- Energy cost-saving: 27%

### HVAC SYSTEM

- Energy-efficient HRV system
- High efficiency VRF system
  - Better environmental stability
  - Initial investment costs reduction
  - Low maintenance and operation costs
  - Easier operation
  - Ozone depletion reduction (R-410)c



## LIGHTING

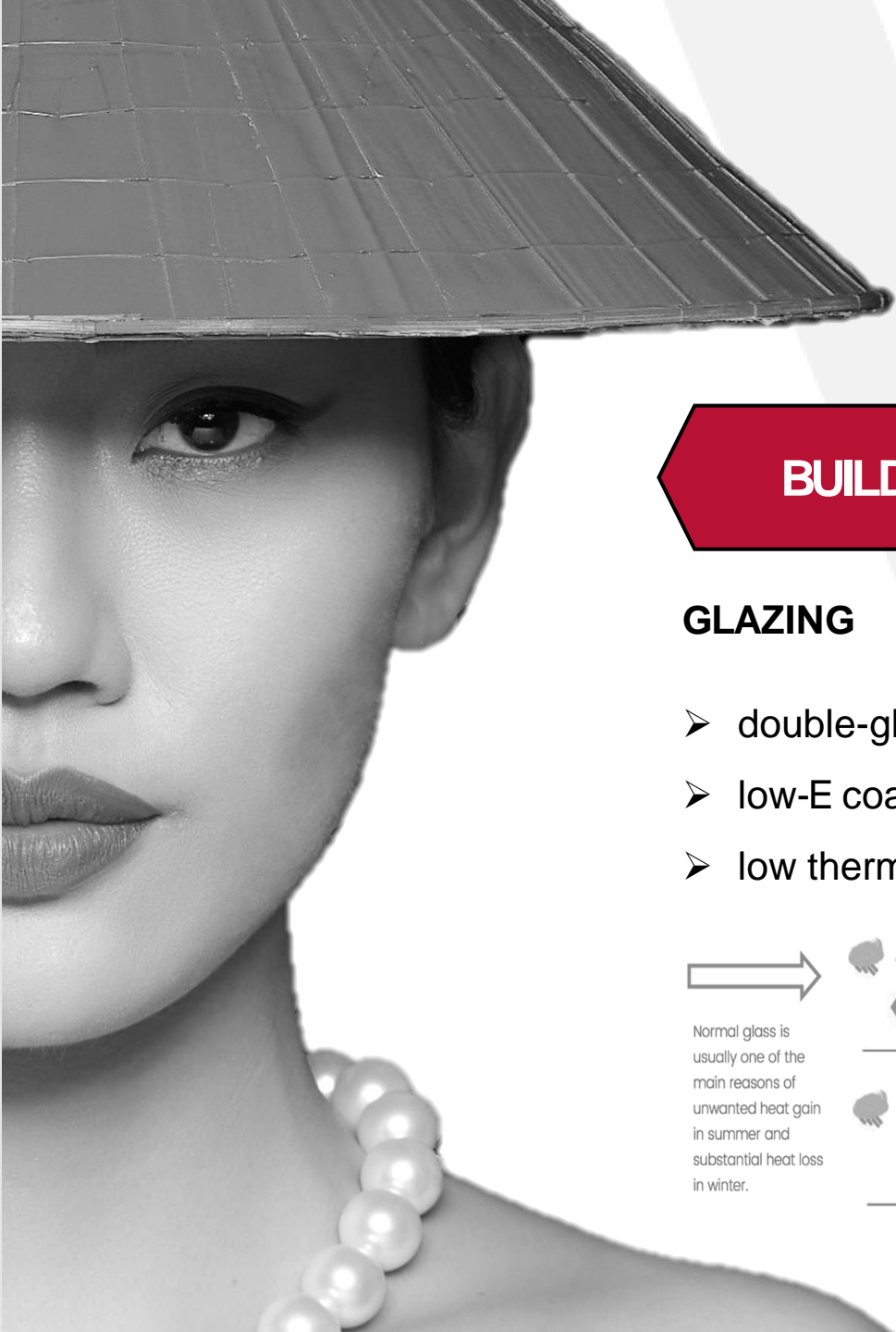
### LIGHTING FIXTURES

- All lighting fixtures are LED type.

### LIGHTING CONTROL

- Lighting in hotel guest rooms are controlled by Room Control Unit system connected to BMS.
- Lighting in stairs, parking, common toilets are controlled by motion sensor.
- Lighting in office areas are controlled by occupancy sensor.
- Exterior lighting is controlled by timer and BMS.

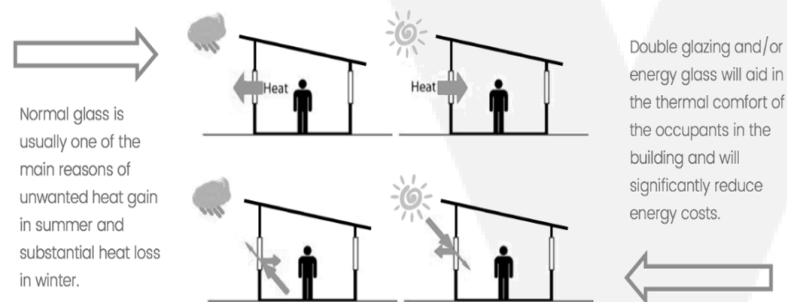




## BUILDING ENVELOPE

### GLAZING

- double-glazing system
- low-E coating
- low thermal transmittance (U-value)



### EXTERNAL WALL

- AAC blocks with low thermal transmittance (U-value) to reduce heat transferred to indoors

### BENEFITS

- solar radiation reduction
- artificial lighting demand reduction
- cooling demand reduction

# SUSTAINABLE FEATURES

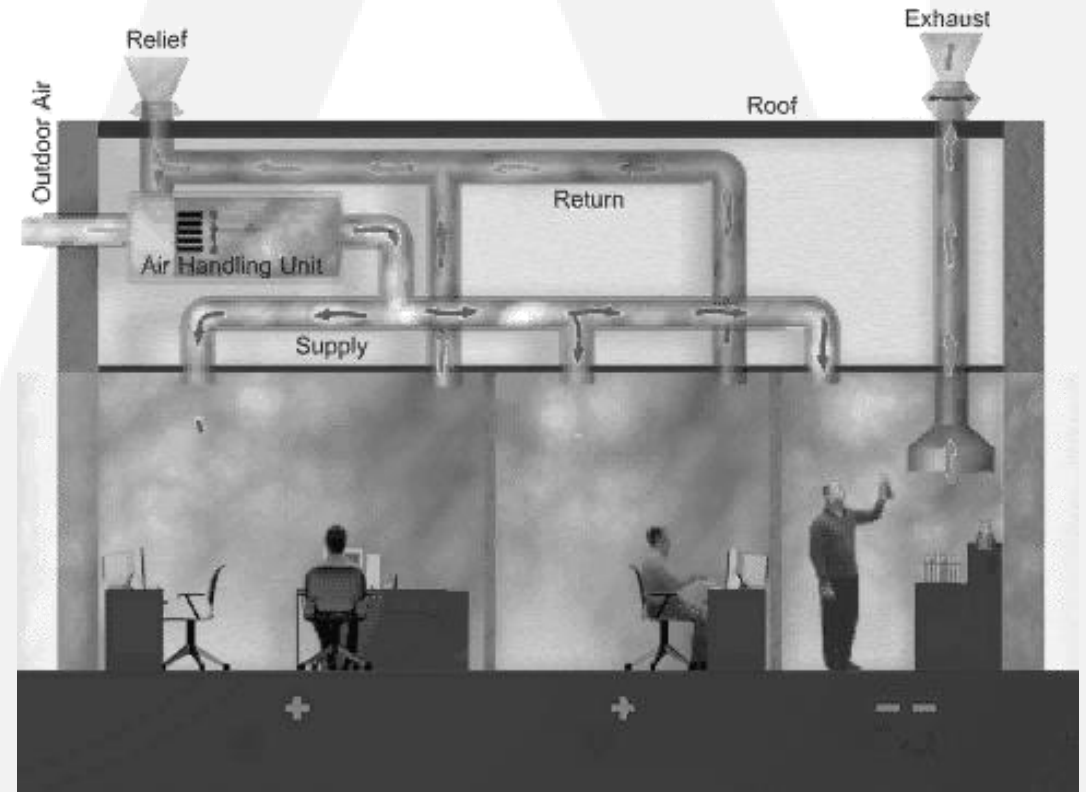
## HVAC SYSTEM

### FRESH AIR SUPPLY

- Install PAU system to supply fresh air for all occupancy spaces
- Installing filtration media with class F8 in PAU system that supplies outdoor air to occupied spaces

### FRESH AIR INCREASE

- Ensure Indoor Air Quality through increasing outdoor air ventilation rates to all occupied spaces by at least 30% above the minimum rates.



# SUSTAINABLE FEATURES

## HEALTH & COMFORT

### DAYLIGHTING

- Install shading on façades to reduce glare for regularly occupied areas
- Provide manual blinds for regularly occupied areas
- Provide daylighting for 90% regularly occupied areas

### QUALITY VIEWS

- Provide quality views for above 90% regularly occupied



# SUSTAINABLE FEATURES

## HEALTH & COMFORT

### NO-SMOKING POLICY

- Prohibit smoking in all areas
- No-smoking policy
- No-smoking signage system

### TRANSPORTATION

- Bicycle storage for both occupants and visitors
- Shortest walking distances to all entrances



### TRANSPORTATION

- 5% of parking spaces for green vehicles
- 5% of parking spaces for carpool
- 5% of parking spaces for electric vehicle supply equipment



...because you get it